

## Company profile >>>

Nordson Electronic Co., Limited is a manufacturer specialized in production and marketing of security products for customers worldwide. Such as Access control System, Access Control Board, Electromagnetic Lock, Electric Bolt Lock, Electric Control Lock, Electric Strike, Time Attendance and Biometrics, etc. We are always striving to be better to provide marketing-oriented and sustainable products that benefit our customers. We commit ourselves to provide better customer services. With many years' experience, we currently have business links with over 100 countries all over the world and enjoy an excellent reputation in the market. We have nearly 80% of our products are export and the rest 20% for domestic sale.

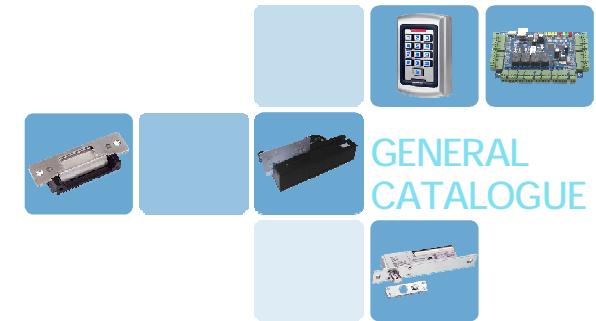
Nordson provides products in OEM or our brand to global market with the strategy "Competitive Price and Service for High Quality". Most products have passed the detection and testing of Public Security Ministry of P. R. China, moreover, owning CE in Europe Union. They have also passed the related MA quality inspection of the Ministry of Public Security. We also insist on our products to be high security, convenience and styles with innovative technology. Nordson has built cooperation with several world famous leading market players such as Philips, zsoft, Samsung, etc., and supplies OEM products to some famous companies in this area. We remain dedicated to provide innovative products and excellent services for the best benefit of our customers.

We gather a number of managerial, technical, and marketing elite to build a complete operating system and ultra-conventional development mode. Beyond the past and looking ahead, in the new period, we will continue to innovate and return on customers' kindness and support with good quality, reasonable price and perfect service.

You are warmly welcomed to visit our company to develop more cooperative opportunities and business relationship. Please contact us now and you will find that working with us is profitable and enjoyable.



**nordson**<sup>TM</sup>  
Your Safety, We Care



### **NORDSON ELECTRONIC CO., LIMITED**

Address: 413, Sun'gang Building, Baogang Road,  
Luohu District, Shenzhen, Guangdong, China

TEL: +86-755-8276 2979 +86-755-8637 7711

FAX: +86-755-8639 7553 ZipCode: 518000

WEB: <http://www.chinanordson.com>

Sales

E-Mail:

[sales@chinanordson.com](mailto:sales@chinanordson.com)

MSN: [nordsonsale@hotmail.com](mailto:nordsonsale@hotmail.com)

Technical Support

E-Mail: [info@chinanordson.com](mailto:info@chinanordson.com)

**NORDSON ELECTRONIC CO., LIMITED**

# ACCESS CONTROL

# CARD READER



**NT-108 Waterproof single door access controller with luminous**

- \* EM-Marin Card Format /125KHz)
- \* Access Control Keypad Containing 2000 users
- \* Support only keypad
- \* users can reset private passwords.
- \* Multi-function device, can use WG26 reader independent.
- \* use keypad to delete lost cards for safety.
- \* Dimension: 120\*80\*25mm



**NT-109 Waterproof single door access controller with luminous**

- \* EM-Marin Card Format /125KHz)
- \* Access Control Keypad Containing 6500 users
- \* Operating Voltage: 12VDC Current Drain: <60mA
- \* Acoustic-optic controlled output
- \* anti-theft alarm inlay, can connect with alarm
- \* Keypad with Three led light
- \* Dimension: 120\*56\*18mm



**NT-106 Waterproof single door access controller with luminous**

- \* EM-Marin Card format /125KHz), Support 500 users
- \* Access Control Keypad Containing 500 users
- \* Operating Voltage: 12VDC Current Drain: <90mA
- \* 4-Operation Mode: 4 number code Operation
- \* Keypad with Three led light
- \* Dimension: 120\*76\*37mm



**NT-402U USB Magnetic Card Reader**

- \* Dimensions: 170Lx42Dx48W(mm)
- \* USB Port Magnet card reader
- \* Support double-way swipe card
- \* Standard: ISO7811-7815
- \* Method: F2F (FM)
- \* Full ASC II Code 39,
- \* Voltage: DC 5V±5%, Current:35mA.



**NT-M2000 ATM Magnetic Card Door Access Controller**

- \* Dimensions: 138Lx56Dx32W(mm)
- \* For special use in ATM self-help bank door access management
- \* It can read all kinds of bank card
- \* It can be connected to the electric lock and the automatic door at the same time
- \* Kinds of electric locks with different power



**AU-100G Microwave sensor**

- \* Technology: Microwave & microwave disposer
- \* Frequency: 2.4GHz
- \* Transmitting power: 20dBm EIRP Launch
- \* Installation Height: 4M (MAX) Installation
- \* Angle: 0-90 degree (length ways) -30 to +30 (lateral)
- \* Detection Mode: Moving Min detection speed: 5cm/s
- \* Power: 2W (VA) Detection range: 8m\*4m (Installation Height 2.2M)
- \* Dimensions: 120\*80\*50mm

## Network Access Control & Time Attendance



**NM-2000 Network Access Control & Time Attendance**

- \* ID card capacity: 30000; Record capacity: 100000
- \* Communication: TCP/IP, RS232/485, USB-host
- \* Professional time attendance function including SMS, work code, DLST, scheduled bell, photo-ID ect.
- \* Access control interface for 3rd party electric lock, door sensor, exit button, alarm, door bell
- \* Wiegand output and input, Anti-passback
- \* Dimension: 140.5\*116\*43.5mm



**NM-2100 Network Two-door Access Control & Time Attendance**

- \* Network Two-Door Access Control
- \* Users Capacity: 2500
- \* Record Capacity: 25000
- \* Display Screen: with 122\*32mm LED display screen
- \* name and job number are displayed, integration of single and double door controllers, standard wiegand 26bits, RS485 communication, connect with management software of 255 sets combining access control, attendance and personnel.
- \* Dimension: 120\*88\*18mm



**NM-2168 Network Two-door Access Control & Time Attendance**

- \* Network Two-Door Access Control
- \* Users Capacity: 6000
- \* Record Capacity: 25000
- \* 122\*32DOTSL LED display screen
- \* name and job number are displayed, integration of single and double door controllers, standard wiegand 26bits, RS485 communication, connect with management software of 255 sets combining access control, attendance and personnel.
- \* Dimension: 133\*86\*27mm



**NM-2268 Network Two-door Access Control & Time Attendance**

- \* Network Two-Door Access Control
- \* Users Capacity: 6000
- \* Record Capacity: 25000
- \* 122\*32DOTS LED display screen, backlighting,
- \* name and job number are displayed, integration of single and double door controllers, standard wiegand 26bits, RS485 communication, connect with management software of 255 sets combining access control, attendance and personnel.
- \* Dimension: 120\*76\*27mm



**NM-SCR100 Network Two-Door Access Control & Time Attendance**

- \* Network RFID Access Control & Time Attendance
- \* RFID capacity: 30000,
- \* Logs capacity: 50000,
- \* Communication: RS232/485, TCP/IP, U-Disk, weigand in/out,
- \* Verification mode: 1:1 or 1:N;
- \* Access Control: 50 Time Zone, 5 Groups, 10 Combination, Holiday Management,
- \* support multiple users access, support stand alone work;
- \* Electric lock control, Directness relay out put 3A/12VDC
- \* Dimension: 153x95.5x35.5mm



**NM-MX618 Network RFID Time Attendance**

- \* Network RFID Time Attendance
- \* Verification Method: ID card
- \* EM500 hardware platform
- \* Card Capacity: 30,000 Transaction Capacity: 100,000
- \* Operation System: Linux
- \* Communication: RS232/485, TCP/IP
- \* Standard Functions: Scheduled-bell, SMS,
- \* Work code, DLST
- \* Display: Black & White LCD
- \* Dimension: 192\*140\*57mm

## Proximity Card Reader



**NK-RF160L Waterproof Card Reader**

- \* Wiegand 26/34, RS485/232, ABA Standard Format Data Output
- \* Fit Multi-Voltage, High Stability and High anti-interference, Patent design, Competitive price. Indeed a best choice for you.
- \* Dimensions: 98mm\*63mm\*15mm



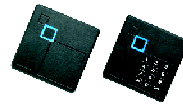
**NK-RF170/190 Waterproof Card Reader with keypad**

- \* Wiegand 26/34 Format Data Output
- \* Card Type: 125KHz EM card
- \* Buzzer inside
- \* Power / Current: DC 6-14V / Max. 70mA
- \* Relative humidity: non-condensing
- \* Color: Black
- \* Material: ABS-PC with texture
- \* Dimension: 86\*86\*16.3(mm)



**NK-RF100/110/120 Waterproof Card Reader**

- \* Wiegand 26/34, RS485/232, ABA Standard Format Data Output
- \* Support EM-ID(64bits, Manchester Code) or Mifare-IC (13.56 MHz Frequency)
- \* Built-in LED (Double Color LED)
- \* Built-in Loud Speaker (Buzzer)
- \* Optional Colors: Black and White
- \* Dimensions: NF-RF100: 80L x 43W x 16H (mm)  
NF-RF110: 86L x 115W x 18H (mm)  
NF-RF120: 86L x 86W x 18H (mm)



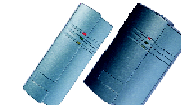
**NK-RF130/140 Waterproof Card Reader**

- \* Wiegand 26/34, RS485/232, ABA Standard Format Data Output
- \* Support EM-ID(64bits, Manchester Code) or Mifare-IC (13.56 MHz Frequency)
- \* Built-in LED (Double Color LED)
- \* Built-in Loud Speaker (Buzzer)
- \* Optional Colors: Black and White
- \* Dimensions: 86L x 86W x 18H (mm)
- \* NK-RF140 Proximity Card Reader with keypad



**NK-RF120/180 Waterproof Card Reader**

- \* Wiegand 26/34, RS485/232, ABA Standard Format Data Output
- \* Support EM-ID(64bits, Manchester Code) or Mifare-IC (13.56 MHz Frequency)
- \* Built-in LED (Double Color LED)
- \* Built-in Loud Speaker (Buzzer)
- \* Color: Dark Grey
- \* Dimensions: NF-RF120: 86x115x18 (mm)  
NF-RF180: 84.5x44x16.8 (mm)



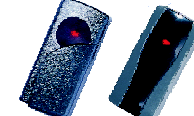
**NK-RF01/02 Waterproof Card Reader**

- \* Wiegand 26/34, RS485/232, ABA Standard Format Data Output
- \* Support EM-ID(64bits, Manchester Code) or Mifare-IC (13.56 MHz Frequency)
- \* Built-in LED (Double Color LED)
- \* Built-in Loud Speaker (Buzzer)
- \* Color: Dark Grey
- \* Dimensions: NF-RF01: 122L x 46W x 23H (mm)  
NF-RF02: 124L x 76W x 23.5H (mm)



**NK-RF180/RF03 Waterproof Card Reader with keypad**

- \* Wiegand 26/34, RS485/232, ABA Standard Format Data Output
- \* Support EM-ID(64bits, Manchester Code) or Mifare-IC (13.56 MHz Frequency)
- \* Built-in LED (Double Color LED)
- \* Built-in Loud Speaker (Buzzer)
- \* Color: Dark Grey
- \* Dimensions: NF-RF180: 108L x 88W x 32H (mm)  
NF-RF03: 86L x 120W x 20H (mm)



**NK-RF04/05 Waterproof Card Reader**

- \* Wiegand 26/34, RS485/232, ABA Standard Format Data Output
- \* Support EM-ID(64bits, Manchester Code) or Mifare-IC (13.56 MHz Frequency)
- \* Built-in LED (Double Color LED)
- \* Built-in Loud Speaker (Buzzer)
- \* Color: Dark Blue
- \* Dimensions: NK-RF04: 114L x 75W x 20H (mm)  
NK-RF05: 123.5L x 72W x 22.5H (mm)



**NK-RF06/07 Waterproof Card Reader**

- \*\* Wiegand 26/34, RS485/232, ABA Standard Format Data Output
- \* Support EM-ID(64bits, Manchester Code) or Mifare-IC (13.56 MHz Frequency)
- \* Built-in LED (Double Color LED)
- \* Built-in Loud Speaker (Buzzer)
- \* Color: Dark Grey
- \* Dimensions: NK-RF06: 88L x 88W x 10H (mm)  
NK-RF07: 76L x 114 x 16 (mm)



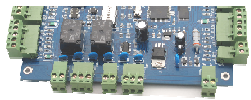
**NK-RF11/12/13 Middle Distance Proximity Card Reader**

- \* Color: Dark Grey
- \* Voltage: DC2V Current ≤100mA
- \* Ambient Temperature: -25°C ~ 75°C
- \* Reading Range: 70-100CM
- \* Output Format: Wiegand 26/34, RS485/232
- \* Card Type: EM-ID Middle distance card
- \* Communication Distance: WG ≤ 100M, RS485 ≤ 1200M
- \* Dimension: 230x230x35 (mm)



**NF-K101/K505 USB Issuing Card Device**

- \* Communication Type: USB Connection
- \* Output Format: Standard keyboard format wiegand26 bit card number
- \* Input Format: EM-ID
- \* Reading Range: 1-6 CM
- \* Working Temperature: -40°C to 70°C
- \* Working Humidity: 0-95%



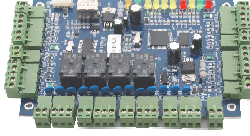
NS-M200 Two Door RS485 Network Access Control



NS-M400 Four Door RS485 Network Access Control



NS-E200 Two Door TCP/IP Network Access Control



NS-E400 Four Door TCP/IP Network Access Control

NS-E100	NS-M200	NS-E200	NS-M400	NS-E400
Control	Two Door Access Control		Four Door Access Control	
IP (standard RJ45 plug)	RS232/485	TCP/IP	RS232/485	TCP/IP
Control 26 (Compatible with all card readers under this protocol, such as Motorola, HID, EM, Mifare one etc)				
	Control 2 door 4 card readers, 2 exit buttons		Control 4 door 4 card readers, 4 exit buttons	
20,000 Users				
100,000 event buffers record				
10M/100M	9600bps	10M/100M	9600bps	10M/100M
DC 9~15V				
<100mA				
-40°C~+70°C				
10-90 % RH, No Condensation				
Overvoltage, anti-thunder and undervoltage protection High Speed Memory, Records never lose				
No limit	N*256PCS	No limit	N*256PCS	No limit
Remark: N denotes quantity of computer serial port or quantity of 485hub port, support 256pcs ports				
100m (suggestion distance to be within 80m)				
Communication Distance less than 13m, suggestion distance is 3m or less Maximum length 1200m, suggestion length 800m or less, if expansion device added, the distance can reach to 3000m depends on net coverage area				
With the expansion board, only has alarm on software interface, and can activate the computer speaker. Without expansion board, it is able to alarm by hardware.				
card, password, card+password, super password				
Yes				



NS-110 Enhanced Alarm Output and Integrated Fire Control Extension Controller

### Function Introduction:

- 4 alarm output, you can specify which function to which door.
- Allow to connect the fire signal output, when fire signal received, doors in the controlled area will be opened automatically, and a fire alarm record will be generated.
- Allow to control: invalid break in alarm, long time unlocking alarm, intimidation break in alarm, unlocking linkage output, invalid card swiping alarm, fire alarm linkage.
- Allow to change anti-intimidation password.
- Can set long time unlocking alarm time: 0-6000 seconds.
- Can set the delay time of each output from: 0 to 6000 seconds.
- Allow to connect PIR sensor, gas/smoke sensor, emergency switch to realize burglar alarm.

## Standalone Access Controller



### NT-100 Standalone Access Control Series

- \* NT-100EM: (EM-Marin Card format /125KHz)  
Access Control Keypad Containing 500 users with Code
- \* NT-100MF: (Mifare format /13.56MHz)  
Access Control Keypad Containing 500 users with Code
- \* NT-101EM: (EM-Marin Card format /125KHz)  
Access Control Keypad Containing 10000 users with Code
- \* NT-101MF: (Mifare format /13.56MHz)  
Access Control Keypad Containing 10000 users with Code



### NT-X6 Standalone Single Door Access Controller

- \* EM-Marin Card format /125KHz), Support 500 users
- \* Access Control Keypad Containing 500 users with Code
- \* Operating Voltage: 12VDC
- \* Current Drain: <60mA
- \* Plastic shell, alternative color (black & grey)
- \* Built in door bell button and a back tamper switch.
- \* Normal / Secure Mode
- \* Dimension: 95\*58\*20mm



### NT-120 Access Control Keypad Containing 500 Users with Code

- \* EM-Marin Card format /125KHz)
- \* 4-Operation Mode: 4 number code Operation (Support 500 users), 4 number code + 4 number code Operation, 4 number code+Card, Card+Card Operation
- \* Keypad Locks for 30 Seconds After 10 False Entries
- \* Can be Connected with Door-open Button and Doorbell
- \* Tamper Switch can be Connected to Security Alarm System



### NT-206E Standalone Single Door Access Controller

- \* EM-Marin Card format /125KHz)
- \* Access Control Keypad Containing 1000 users
- \* Operating Voltage: 12VDC
- \* Operations is simple and clear
- \* Adding and deleting card flexibly
- \* Card deleting can be done under off-line working
- \* Dapper appearance, stable performance
- \* Dimension: 113\*63\*20mm



NU-05A for Progi

### Features:

- Two-way line connect 7A
- Outlook: Blar

Size: 278\*234\*

Input Voltage

Output: DC 12

N Si

- \* El
- \* A
- \* O
- \* A
- \* ar
- \* K
- \* O
- \* D

N C

- \* Ty
- \* 3
- \* C
- \* A
- \* C
- \* N
- \* T
- \* A

# ELECTRIC LOCK

# ELECTRIC STRIKE



**NI-409 All purpose type Electric Bolt all purpose type**

- \* NI-409 (Fail-secure & Fail-safe all purpose type)
- \* Voltage: DC12V
- \* Start Current: 900mA Standby Current: 150mA
- \* Face Plate: 210L\*25W\*45H(mm)
- \* Strike Plate: 80L\*24W\*3W(mm)
- \* Bolt: 17mm DIA, stainless steel 16mm throw
- \* Solid Bolt: Polishing housing, 2000Kg Holding Force
- \* Suitable for: Wooden Door, Glass Door, Metal Door
- \* Autolock Time Delay: 0, 3, 6, 9sec.



**NI-610 Electric Bolt Lock Hanging with Timer**

- \* Power Supply: DC 12V
- \* Fail-Safe Type: power to lock
- \* Surface Temp: Low Temperature
- \* Signal Output: lock status indicator and door status Output.NC/NO/COM
- \* Door lock delay time: 0/ 3/ 6 seconds available to set
- \* Suitable for only swing-in or swing-out open wood and metal door, can easy to be installed external door frame



**NI-610-L Electric Bolt Lock Hanging with Timer**

- \* Power Supply: DC 12V
- \* Fail-Safe Type: power to lock
- \* Surface Temp: Low Temperature
- \* Signal Output: lock status indicator and door status Output.NC/NO/COM
- \* Door lock delay time: 0/ 3/ 6 seconds available to set
- \* Suitable for only swing-in or swing-out open wood and metal door, can easy to be installed external door frame



**NJ-300A/300B Standard-type Electric Strike Series**

- \* Lock Size: 150Lx39Wx31H(mm)
- \* Holding Strength: 800kg
- \* Bolt structure: Stainless Steel
- \* Voltage: 12VDC
- \* Function: Built-out MOV
- \* NJ-300A: (Fail-secure: Power-off to lock)
- \* NJ-300B: (Fail-safe: Power-off to unlock)
- \* Suitable For: Wooden, aluminum and hollow metal doors



**NJ-320A/320B ANSI standard Heavy Duty Electric Strike Series**

- \* Lock Size: 124Lx32Wx36H(mm)
- \* Holding Strength: 800kg
- \* Bolt structure: Stainless Steel
- \* Voltage: 12VDC
- \* Function: Built-out MOV
- \* NJ-320A: (Fail-secure: Power-off to lock)
- \* NJ-320B: (Fail-safe: Power-off to unlock)
- \* Suitable For: Wooden, aluminum and hollow metal doors



**NJ-320A-S/320B-S Narrow-type Electric Strike with Signal Output**

- \* Lock Size: 124Lx32Wx36H(mm)
- \* Holding Strength: 800kg
- \* Bolt structure: Stainless Steel
- \* Voltage: 12VDC
- \* Function: Built-out MOV
- \* With Signal Output: Lock Status Output NO/NC/COM
- \* NJ-320A-S: (Fail-secure: Power-off to lock)
- \* NJ-320B-S: (Fail-safe: Power-off to unlock)
- \* Suitable For: Wooden, aluminum and hollow metal doors

## Electric Control Lock



**ND-1200A Single Electric Control Lock (spray-powder)**

- \* Power Supply: DC 12V
- \* Sensitivity: 1s
- \* Surface Temp: Low Temperature
- \* Locking method: by collision
- \* no function of inside opening for single lock, releasing with opening knob or key



**ND-1200B Double Electric Control Lock (spray-powder)**

- \* Power Supply: DC 12V
- \* Sensitivity: 1s
- \* Surface Temp: Low Temperature
- \* Locking method: by collision
- \* Double locks with inside opening function. It must be opened with key when locking inside



**ND-1500A Single Electric Control Lock (nickel plating)**

- \* Power Supply: DC 12V
- \* Sensitivity: 1s
- \* Surface Temp: Low Temperature
- \* Locking method: by collision
- \* no function of inside opening for single lock, releasing with opening knob or key



**ND-1500B Double Electric Control Lock (nickel plating)**

- \* Power Supply: DC 12V
- \* Sensitivity: 1s
- \* Surface Temp: Low Temperature
- \* Locking method: by collision
- \* Double locks with inside opening function. It must open with key when locking inside



**ND-1800B Double Electric Control Lock (Bronze plating)**

- \* Power Supply: DC 12V
- \* Sensitivity: 1s
- \* Surface Temp: Low Temperature
- \* Locking method: by collision
- \* Double locks with inside opening function. It must open with key when locking inside



**ND-3000 Electro-mechanical Lock**

- \* Power Supply: DC 12V
- \* Lock-opening delay time: automatically lock within 9s if not opened
- \* Surface Temp: Low Temperature
- \* automatic locking controlled by autocomputer, alarm if bolt is not in correct position when locking by power
- \* Locking method: magnetic induction



**ND-2000 Electric Silence Lock**

- \* Power Supply: DC 12V
- \* Sensitivity: 1s
- \* Surface Temp: Low Temperature
- \* Locking method: magnetic induction
- \* Low noise, Low consumption, long life, convenient installation
- \* No necessary to identify installation directions



**ND-5000A Standalone ID card Intelligent Lock**

- \* 1000 user's card, With management card, Easy management.
- \* Power Supply: DC 12V
- \* Metal gear, five line synchronous motor, more stable than plastic gear, and longer life spans.
- \* Crescent-shaped key cylinder.
- \* Low noise, Long life, convenient installation.
- \* External card reader is available.
- \* External remote control to open the door is available.



**ND-5000B Double Standalone ID card Intelligent Lock**

- \* 1000 user's card, With management card, Easy management.
- \* Power Supply: DC 12V
- \* Metal gear, five line synchronous motor, more stable than plastic gear, and longer life spans.
- \* Crescent-shaped key cylinder, with key.
- \* Low noise, Long life, convenient installation.
- \* External card reader is available.
- \* External remote control to open the door is available.



**NJ-320A-L/320B-L Long Type American Strike**

- \* Lock Size: 165L\*32W\*33H(mm)
- \* Holding Strength: 800kg
- \* Bolt structure: Stainless Steel
- \* Voltage: 12VDC
- \* Function: Built-out MOV
- \* NJ-320A-L: (Fail-secure: Power-off to lock)
- \* NJ-320B-L: (Fail-safe: Power-off to unlock)
- \* Suitable For: Wooden, aluminum and hollow metal doors



**NJ-320A-L-S/NJ-320B-L-S American Strike with Signal Output**

- \* Lock Size: 165L\*32W\*33H(mm)
- \* Holding Strength: 800kg
- \* Bolt structure: Stainless Steel
- \* Voltage: 12VDC
- \* Function: Built-out MOV
- \* With Signal Output: Lock Status Output NO/NC/COM
- \* NJ-320A-L-S: (Fail-secure: Power-off to lock)
- \* NJ-320B-L-S: (Fail-safe: Power-off to unlock)
- \* Suitable For: Wooden, aluminum and hollow metal doors



**NJ-320XL/NJ-320B-XL Long Type European Electric Strike**

- \* Lock Size: 250L\*32W\*33H(mm)
- \* Holding Strength: 800kg
- \* Bolt structure: Stainless Steel
- \* Voltage: 12VDC
- \* Function: Built-out MOV
- \* NJ-320A-XL: (Fail-secure: Power-off to lock)
- \* NJ-320B-XL: (Fail-safe: Power-off to unlock)
- \* Suitable For: Wooden, aluminum and hollow metal doors



**NJ-350A/350B Narrow-type Electric Strike Series**

- \* Lock Size: 160Lx25Wx31H(mm)
- \* Holding Strength: 800kg
- \* Bolt structure: Stainless Steel
- \* Voltage: 12VDC
- \* Function: Built-out MOV
- \* NJ-350A: (Fail-secure: Power-off to lock)
- \* NJ-350B: (Fail-safe: Power-off to unlock)
- \* Suitable For: Wooden, aluminum and hollow metal doors



**NJ-312A/312B Long-type Electric Strike Series**

- \* Lock Size: 250Lx25Wx31H(mm)
- \* Holding Strength: 800kg
- \* Bolt structure: Stainless Steel
- \* Voltage: 12VDC
- \* Function: Built-out MOV
- \* NJ-312A: (Fail-secure: Power-off to lock)
- \* NJ-312B: (Fail-safe: Power-off to unlock)
- \* Suitable For: Wooden, aluminum and hollow metal doors



**NJ-313 Fail Safe Electric Strike Suitable for Glass Door**

- \* Lock Size: 160Lx25Wx31H(mm)
- \* Holding Strength: 500kg
- \* Bolt structure: Stainless Steel
- \* Voltage: 12VDC
- \* Function: Built-out MOV\* Power Supply: DC 12V
- \* NJ-313: (Fail-safe: Power-off to unlock)
- \* Suitable For: Glass Door



**NJ-314 European Narrow-type and Adjustable Electric Strike**

- \* Lock Size: 110Lx25Wx31.5H(mm)
- \* Holding Strength: 800kg
- \* Bolt structure: Stainless Steel
- \* Voltage: 12VDC
- \* Function: Built-out MOV\* Power Supply: DC 12V
- \* Special Design: Adjust Lock-tongue to NO style
- \* Suitable For: Wooden, aluminum and hollow metal doors



**NJ-314L European Narrow-type and Adjustable Electric Strike**

- \* Lock Size: 250L\*25W\*31.5H(mm)
- \* Holding Strength: 800kg
- \* Bolt structure: Stainless Steel
- \* Voltage: 12VDC
- \* Function: Built-out MOV\* Power Supply: DC 12V
- \* Special Design: Adjust Lock-tongue to NO style
- \* Suitable For: Wooden, aluminum and hollow metal doors



**NU-12 Voltage Switch Module (24V to 12V)**

- \* Dimensions: 40L\*27W\*12H(mm)
- \* Material: High quality elements with superb design
- \* Input: 12-28VDC (Blue)
- \* Output: 12VDC / 1A (Green)
- \* Weight: 0.03kg



# ELECTROMAGNETIC LOCK

# ELECTROMAGNETIC LOCK

## HOLDING MAGNETS

## HOLDING MAGNETS



Holding power approx.  
**NE-60:100Lbs(60kg) NE-80:130Lbs(80kg)**

### NE-60 / NE-80

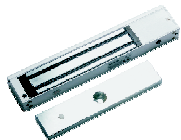
NE-60: Lock Size: 80Lx40Wx25H(mm)  
 Armature plate: 70Lx33Wx9H(mm)  
 NE-80: Lock Size: 90Lx27Wx15H(mm)  
 Armature plate: 75Lx27Wx10H(mm)  
 Voltage: 12VDC 100mA  
 Aluminium housing surface



Holding power approx. **350Lbs(180kg)**  
 Hanging Series.

### NE-180 / NE-180S

NE-180: Without Signal Output  
 NE-180S: With door position detection output  
 Lock Size: 170Lx35Wx21H(mm)  
 Armature plate: 130Lx33Wx9.3H(mm)  
 Holding Force: 350Lbs(180kg)  
 Aluminium housing surface



Holding power approx. **600Lbs(280kg)**  
 Hanging Series.

### NE-280 / NE-280S/NE-280ST

NE-280: Without LED  
 NE-280S: With LED and door position detection output  
 NE-280ST: With LED door position detection output & delay  
 Lock Size: 250Lx48Wx25H(mm)  
 Armature plate: 180Lx38Wx11H(mm)  
 Holding Force: 600Lbs(280kg)  
 Aluminium housing surface



Holding power approx.  
**NE-70:120Lbs(70kg) NE-90XP:150Lbs(150kg)**  
 Magnetic Lock for Auto-door

### NE-70/NE-90XP

NE-70: Lock Size: 70Lx70Wx58H(mm)  
 Armature Plate: 100L\*53W\*50H(mm)  
 NE-90XP: Lock Size: 138Lx83Wx53H(mm)  
 Armature Plate: 67L\*44W\*10H(mm)  
 Voltage: 12VDC 180mA  
 Aluminium housing surface



Holding power approx. **350Lbs(180kg)**  
 Stainless steel Mortise Mount Series.

### NE-180M / NE-180MS

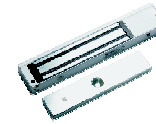
NE-180: Without Signal Output  
 NE-180S: With door position detection output  
 Lock Size: 191Lx32.5Wx21H(mm)  
 Armature plate: 130Lx36Wx11H(mm)  
 Holding Force: 350Lbs(180kg)  
 Stainless steel housing surface



Holding power approx. **600Lbs(280kg)**  
 Mortise Mount Series.

### NE-280M / NE-280MS

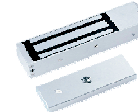
NE-280M: Without Signal Output  
 NE-280MS: With door position detection output  
 Lock Size: 226Lx38Wx23H(mm)  
 Armature plate: 180Lx38Wx11H(mm)  
 Holding Force: 600Lbs(280kg)  
 Aluminium housing surface



Holding power approx. **800Lbs(380kg)**  
 Hanging Series.

### NE-380 / NE-380S/NE-380ST

NE-380: Without LED  
 NE-380S: With LED and door position detection output  
 NE-380ST: With LED and door position detection output & delay  
 Lock Size: 280Lx49Wx29H(mm)  
 Armature plate: 190Lx39Wx11H(mm)  
 Holding Force: 800Lbs(380kg)  
 Aluminium housing surface



Holding power approx. **1200Lbs(600kg)**  
 Hanging Series.

### NE-600 / NE-600S / NE-600ST

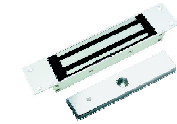
NE-600: Without LED  
 NE-600S: With LED and door position detection output  
 NE-600ST: With LED and door position detection output & delay  
 Lock Size: 266Lx67Wx39H(mm)  
 Armature plate: 185Lx57Wx13H(mm)  
 Holding Force: 1200Lbs(600kg)  
 Aluminium housing surface



Holding power approx. **600Lbs(250kg)**  
 Door Handle Series.

### NE-250H

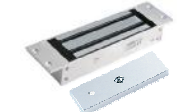
NE-250H: With door position detection output  
 Lock Size: 300Lx92Wx58H(mm)  
 Armature plate: 274Lx46Wx30H(mm)  
 Holding Force: 600Lbs(250kg)  
 Aluminium housing surface



Holding power approx. **800Lbs(380kg)**  
 Mortise Mount Series.

### NE-380M / NE-380MS

NE-380M: Without Signal Output  
 NE-380MS: With door position detection output  
 Lock Size: 273Lx60Wx30H(mm)  
 Armature plate: 190Lx45Wx11H(mm)  
 Holding Force: 800Lbs(380kg)  
 Aluminium housing surface



Holding power approx. **1200Lbs(600kg)**  
 Mortise Mount Series.

### NE-600M / NE-600MS

NE-600M: Without LED  
 NE-600MS: With door position detection output  
 Lock Size: 254Lx65.8Wx38.8H(mm)  
 Armature plate: 185Lx60Wx13H(mm)  
 Holding Force: 1200Lbs(600kg)  
 Aluminium housing surface



Holding power approx. **600Lbs(280kg)**  
 Stainless steel Hanging Series.

### NW-280

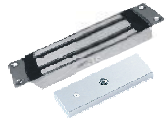
NW-280: Without LED  
 Lock Size: 222Lx47.2Wx26H(mm)  
 Armature plate: 180Lx38Wx11H(mm)  
 Holding Force: 600Lbs(280kg)  
 Stainless steel housing surface

# ELECTROMAGNETIC LOCK

# ELECTRIC BOLT LOCK

## HOLDING MAGNETS

## ELECTRIC BOLT LOCK



Holding power approx. **600Lbs/800Lbs/1000Lbs**  
**Stainless steel Mortise Mount Series.**

### NW-250M/350M/500M

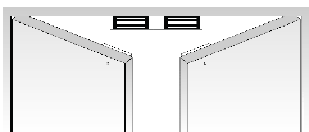
**NW-250M:** Lock Size: 230L\*43W\*25H(mm)  
 Armature plate: 180L\*45W\*11H(mm)  
 Holding Force: 600Lbs(250kg)  
**NW-350M:** Lock Size: 215L\*47W\*32H(mm)  
 Armature plate: 180L\*45W\*11H(mm)  
 Holding Force: 750Lbs(350kg)  
**NW-500M:** Lock Size: 245L\*65W\*38H(mm)  
 Armature plate: 185L\*60W\*13H(mm)  
 Holding Force: 1000Lbs(500kg)



Holding power approx.  
**NW-250S:600Lbs(250kg)/NW-500S:1200Lbs(600kg)**  
**Stainless steel Hanging Series.**

### NW-250S / NW-500S

**NW-250S:** Lock Size: 205L\*42W\*29H(mm)  
 Armature Plate: 185L\*38W\*11H(mm)  
**NW-500S:** With door position detection output  
 Lock Size: 220L\*63W\*41H(mm)  
 Armature plate: 187L\*60W\*16H(mm)  
 Stainless steel housing surface



Mounting example  
 For locking double doors



Holding power approx. **800Lbs(350kg)**  
**Stainless steel Hanging Series.**

### NW-350

**NW-350:** Without LED  
 Lock Size: 227.6L\*52.6W\*28.3H(mm)  
 Armature plate: 190L\*45W\*11H(mm)  
 Holding Force: 800Lbs(350kg)  
 Stainless steel housing surface



Holding power approx. **2600Lbs(1200kg)**  
**Shear Lock**

### NE-1200

With LED and door position detection output  
 Lock Size: 182Lx30Wx25H(mm)  
 Armature plate: 182Lx30Wx23.6H(mm)  
 Holding Force: 2600Lbs(1200kg)  
 Aluminium housing surface

### NE-180D / NE-180DS

**NE-180D:** Without Signal Output  
**NE-180DS:** With door position detection output (NO/NC)  
 Holding Force: 2x350Lbs(180kg)

### NE-280D / NE-280DS

**NE-280:** Without LED  
**NE-280S:** With LED and door position detection output  
 Holding Force: 2x600Lbs(280kg)

### NE-380D / NE-380DS

**NE-380D:** Without LED  
**NE-380DS:** With LED and door position detection output  
 Holding Force: 2x800Lbs(380kg)

### NE-600D / NE-600DS

**NE-600D:** Without LED  
**NE-600DS:** With LED and door position detection output  
 Holding Force: 2x1200Lbs(600kg)



### NI-100 Electric Bolt

- \* 2 Line Electric Dropbolt with Normal temperature
- \* Power Supply: DC 12V
- \* Fail-Safe Type: power to lock
- \* Face Plate: 205Lx35Wx40H(mm)
- \* Strike plate : 90Lx25Wx2H(mm)
- \* Bolt : 16mm(Throw) x 16mm(Diameter)



### NI-100A Electric Bolt

- \* 2 Line Electric Dropbolt with Low Temperature
- \* Power Supply: DC 12V
- \* Fail-Safe Type: power to lock
- \* Face Plate: 205Lx35Wx40H(mm)
- \* Strike plate : 90Lx25Wx2H(mm)
- \* Bolt : 16mm(Throw) x 16mm(Diameter)



### NI-100B Electric Bolt

- \* 2 Line Electric Bolt Lock with Low Temperature & Timer
- \* Power Supply: DC 12V
- \* Fail-Safe Type: power to lock
- \* Door lock delay time: 0/ 3/ 6/ 9 seconds available to set
- \* Face Plate: 205Lx35Wx40H(mm)
- \* Strike plate : 90Lx25Wx2H(mm)
- \* Bolt : 16mm(Throw) x 16mm(Diameter)



### NI-100C Electric Bolt

- \* 4 Line Electric Dropbolt with Low Temperature
- \* Signal Output: door position output point, NC/COM
- \* Power Supply: DC 12V
- \* Fail-Safe Type: power to lock
- \* Face Plate: 205Lx35Wx40H(mm)
- \* Strike Plate : 90Lx25Wx2H(mm)
- \* Bolt : 16mm(Throw) x 16mm(Diameter)



### NI-100D Electric Bolt

- \* 4 Line Electric Dropbolt with Low Temperature and Timer
- \* Signal Output: door position output point, NC/COM
- \* Power Supply: DC 12V
- \* lock delay time: 0/ 3/ 6/ 9 seconds available to set
- \* Face Plate: 205Lx35Wx40H(mm)
- \* Strike plate : 90Lx25Wx2H(mm)
- \* Bolt : 16mm(Throw) x 16mm(Diameter)



### NI-100E Electric Bolt

- \* 5 Line Electric Dropbolt with Low Temperature and Timer
- \* Signal Output: door position output point, NC/COM
- \* Built-in photo couplers door open push button.
- \* Power Supply: DC 12V
- \* Fail-Safe Type: power to lock
- \* lock delay time: 0/ 3/ 6/ 9 seconds available to set
- \* Face Plate: 205Lx35Wx40H(mm)
- \* Strike plate : 90Lx25Wx2H(mm)
- \* Bolt : 16mm(Throw) x 16mm(Diameter)



### NI-405 Micro Dead Bolt Lock (all purpose type)

- \* Power Supply: DC12V
- \* Door position detection and bolt position (N.C. & N.O.) output points
- \* Face Plate: 205L\*30W\*38H(mm)
- \* Strike Plate : 100L\*25W\*3W(mm)
- \* Bolt : 13mm DIA, stainless steel 16mm throw
- \* Adjustable fail-safe (power to lock) or fail-secure (power to open)
- \* Suitable For: Wooden door, Metal door, Fireproof door



### NI-200T Electric Shutter Lock

- \* Power Supply: DC 12V
- \* Fail-Safe Type: power to lock
- \* Surface Temp: Low Temperature
- \* LED: can be conscious of red led light when door locked or unlocked
- \* Signal door position output point, NO/NC/COM
- \* lock delay time: 0/ 3/ 6/ 9 seconds available to set
- \* Suitable For: Wooden door, Glass door, Metal door, Fireproof door



### NI-300T Sturdiness Electric Bolt With Narrow Panel

- \* Power Supply: DC 12V
- \* Fail-Safe Type: power to lock
- \* Surface Temp: Low Temperature
- \* Face Plate: 202Lx35Wx43H(mm)
- \* Bolt : 17mm DIA, stainless steel 13mm throw
- \* lock delay time: 0/ 2.5/ 5/ 8seconds available to set
- \* Suitable For: Wooden Door, Metal Door, PVC Door



### NI-400T Fail Secure Electric Bolt With Mort Lock Cylinder

- \* Power Supply: DC 12V
- \* Fail-Safe Type: power to open
- \* Surface Temp: Low Temperature
- \* Solid Bolt: polishing housing, 2000kg Holding Force
- \* Signal Output: Lock status Output, NO/NC/COM
- \* Autolock Time Delay: 0, 3, 6, 9sec.
- \* Suitable For: Wooden door, Glass door, Metal door, Fireproof door



### NI-500A/500B Electric Bolt With Magnetic feature

- \* Power Supply: DC 12V
- \* Fail-Safe Type: NI-500A. (power to lock)
- \* Fail-Secure Type: NI-500B. (power to open)
- \* Surface Temp: Low Temperature
- \* Solid Bolt: polishing housing, 2000kg Holding Force
- \* Autolock Time Delay: 0, 3, 6, 9sec.
- \* Suitable For: Wooden door, Glass door, Metal door, Fireproof door



### NI-600 Electric Strike for Frameless Glass Door

- \* Power Supply: DC 12V
- \* Fail-Safe Type: power to lock
- \* Surface Temp: Low Temperature
- \* Signal Output: lock status indicator and door status Output, NC/NO/COM
- \* Door lock delay time: 0/ 3/ 6 seconds available to set
- \* Suitable For: Fully Frameless(12-15mm thickness)

## Cabinet Lock



**NI-7143 Electric Bolt Lock for Small Cabinet**

- \* Delicate 7143 is very fit for desk or cabinet in offices, high secure and more easy to operate.
- \* Connect to a stable power supply and which will open when it is energized.
- \* Input Voltage: 12VDC; Operating Current: 0.25A
- \* Dimensions: 41\*35\*19mm



**NI-16 Electric Bolt Lock for Small Cabinet**

- \* Pin Length: 18mm
- \* Pin Diameter: 7mm
- \* Voltage: 12VDC; Current: 320mA
- \* With door position detection output
- \* Dimensions: 55\*55\*25MM



**NI-19/NI-19-B Small Cabinet Lock**

- \* NI-19 without key, NI-19-B with key
- \* Power to open
- \* For swinging or sliding doors.
- \* Holding Force : 300kg
- \* Voltage: 12VDC; Current: 300mA
- \* Dimensions: 125\*28\*30MM



**NI-11/NI-11-N Electric Lock for Small Cabinet**

- \* (Fail-secure type: Power to open)
- \* Voltage: 12VDC
- \* Current: 0.6A
- \* Suitable for: Small cabinet
- \* Dimensions: 55\*43\*28mm



**NI-13/NI-13-N Electric Lock for Small Cabinet**

- \* (Fail-secure type: Power to open)
- \* Working Voltage: DC12V
- \* Working Current: 0.35A
- \* Length Extension of Lockpin: 6MM
- \* Dimensions: 62\*27\*29MM



**NI-12 Electric Bolt Lock for Small Cabinet**

- \* (Fail-secure type: Power to open)
- \* Voltage: 12VDC
- \* Current: 1.5A
- \* Suitable For: Small cabinet
- \* Dimensions: 62\*27\*29MM

## Fire Protection Equipment Series



**NP-G110 Basic Wall Mount Door Holder**

- \* Dimensions: 80L\*80W\*40H(mm)
- \* Holding Force: 50kg(100Lbs)
- \* Voltage: 12/24VDC+10%
- \* Current Draw: 12V/100mA 24V/50mA
- \* Fail-safe type (power to lock)



**NP-G120 Extended Wall Mount Door Holder**

- \* Dimensions: 80L\*80W\*105H(mm)
- \* Holding Force: 50kg(100Lbs)
- \* Voltage: 12/24VDC+10%
- \* Current Draw: 12V/80mA 24V/40mA
- \* Fail-safe type (power to lock)



**NP-G130 Mortice Mounted Door Holder**

- \* Dimensions: 88L\*88W\*27H(mm)
- \* Holding Force: 50kg(100Lbs)
- \* Voltage: 12/24VDC+10%
- \* Current Draw: 12V/80mA 24V/40mA
- \* Fail-safe type (power to lock)



**NP-G140 Wall Mount Door Holder**

- \* Dimensions: 70L\*40W\*85H(mm)
- \* Holding Force: 70kg(150Lbs)
- \* Voltage: 24VDC+10% (12VDC need order)
- \* Current Draw: 12V/100mA 24V/40mA
- \* Fail-safe type (power to lock), suitable for fire exit door.
- Optional: Manual door release button



**NP-G150 Floor and Wall Mount Door Holder**

- \* Dimensions: 118L\*92W\*120H(mm)
- \* Holding Force: 70kg(150Lbs)
- \* Voltage: 24VDC+10% (12VDC need order)
- \* Current Draw: 12V/100mA 24V/50mA
- \* Optional: Manual door release button
- \* Finishes for Shell: High Temperature Paint and Environmental Protection Zinc



**NP-G160 Floor Mount Door Holder**

- \* Dimensions: 80L\*80W\*120H(mm)
- \* Holding Force: 70kg(150Lbs)
- \* Voltage: 12/24VDC+10% (Adjustment)
- \* Current Draw: 12V/100mA 24V/50mA
- \* Optional: The Hand Moves and Closes the Door to Release the Button
- \* Finishes for Shell: High Temperature Paint and Environmental Protection Zinc



**NP-800 Exit control lock**

- \* Providing whole-day security protection, one-year life battery capacity, no extra maintenance charges
- \* Durable, Reliable and long working life
- \* Solid, anti-theft, stainless steel lock tongue
- \* Loading force of 22001bs(1000kgs)
- \* Lock Size: 120L\*86W\*109H(mm); Pole Size: 640L\*36W(mm)



**GA-311 Valve controller**

- \* Working Voltage: DC8V-16V
- \* Working Current: 20mA-200mA
- \* Valve Specifications: 1/2", 1"
- \* Moment: 3.5 N.m
- \* Auto Open/Close Time: 6-20s
- \* Anti-pressure: DC1000V
- \* Size: 98\*69\*108mm



**GA-336 Gas detector**

- \* Voltage: AC220V or DC12V
- \* sound pressure range:  $\geq 70$ dB/m
- \* consumed power:  $\leq 5W$
- \* resume density: 8% LEL
- \* Induced gas: coal gas, natural gas, LPG
- \* Size: 119\*68\*46mm



**GA-338 Gas detector**

- \* Voltage: AC220V or DC12V
- \* sound pressure range:  $\geq 70$ dB/m
- \* consumed power:  $\leq 5W$
- \* resume density: 8% LEL
- \* Alarm density Error:  $\leq \pm 5\%$  LEL
- \* Size: 119\*68\*46mm

## Exit Switch and Button



**NF-20/50/80 Exit Push Button Series (Stainless steel)**

- \* Stainless steel push buttons and panel design.
- \* Suitable for hollow door frame or use
- \* Mechanical Life: 1000000 tested
- \* Current Rating: 3A@36VDC Max
- \* Dimensions: NF-20: 91Lx28Wx20H(mm)  
NF-50: 115Lx70Wx20H(mm)  
NF-80: 86Lx86Wx20H(mm)
- \* Night Luminous is optional



**NF-62/82 Exit Push Button Series (Aluminium)**

- \* Standard Structure: Aluminum Panel, Steel Button
- \* Suitable for hollow door frame or use
- \* Mechanical Life: 1000000 tested
- \* Current Rating: 3A@36VDC Max
- \* Dimensions: NF-62: 86Lx50Wx20H(mm)  
NF-82: 86Lx86Wx20H(mm)
- \* Night Luminous is optional



**NF-10/86A/86B Exit Push Button (Plastic)**

- \* Standard Structure: Fireproof Material
- \* Suitable for hollow door frame or use
- \* Mechanical Life: 1000000 tested
- \* Current Rating: 3A@36VDC Max
- \* Dimensions: NF-10: 91Lx28Wx20H(mm)  
NF-86A/86B: 86Lx86Wx20H(mm)



**NF-70/85 Infrared Sensor**

- \* Input : DC12V
- \* Contact Rating: 12-28V, 3A
- \* Output Contact: NO/NC/COM
- \* Mechanical Life: 500000 tested
- \* Suitable for Door: Hollow Door
- \* LED Indicator:
- \* White LED indicator: Power OFF
- \* Blue LED indicator: Power ON(standby)
- \* Red LED indicator: Power ON(sensation)
- \* Dimensions: NF-70: 115Lx70Wx29H(mm)  
NF-85: 86Lx86Wx29H(mm)



**NF-C1/C2 Touch Sensor**

- \* Input : DC12V
- \* Contact Rating: 12-28V, 3A
- \* Output Contact: NO/NC/COM
- \* Mechanical Life: 500000 tested
- \* Suitable for Door: Hollow Door
- \* LED Indicator:
- \* White LED indicator: Power OFF
- \* Blue LED indicator: Power ON(standby)
- \* Red LED indicator: Power ON(sensation)
- \* Dimensions: NF-C1: 86Lx52Wx26H(mm)  
NF-C2: 86Lx86Wx26H(mm)



**NF-30 Exit Push Button (Stainless steel with back box)**

- \* Door Release button with back box
- \* Current Rating: 3A@36VDC Max
- \* Mechanical Life: 1000000 tested
- \* Suitable for Door: Hollow Door
- \* Output Contact: NO/COM
- \* Dimensions: 83x32x25(mm)



**NF-R12/16 Remote Control**

- \* Contact Output: NO/NC/COM
- \* Transmitting Freq: 433.92MHZ
- \* Transmitting Power: 10mW
- \* Suitable for: access control
- \* Transmitting Distance:  $\geq 70$ m(in open area)
- \* Finished for Shell: Plastic, Abrasion Resistant
- \* Dimensions: NF-R12: 66Lx45Wx30H(mm)  
NF-R16: 60Lx42Wx28H(mm)



**NF-83L Emergency switch**

- \* with LED Light
- \* Standard Structure: Stainless steel Panel with Key
- \* Current Rating: 3A@36VDC
- \* MaxMechanical Life: 100000 tested
- \* Suitable for Door: Hollow Door
- \* Dimensions: 86x86x20(mm)



**NF-89 Break Glass Fire Emergency Exit Release**

- \* Standard Structure: Fireproof Material, Easy to install
- \* Suitable for Door: Exit Door, Emergency Door
- \* Current Rating: 3A@36VDC Max
- \* Optional Colors: Green, Yellow, White and Red
- \* Dimensions: 86x86x50H(mm)

## Fingerprint Products



### FR-F8 Fingerprint Time Attendance and Access Control

- \* Dimension: 196x100x53.5mm
- \* User capacity: 1500
- \* Transaction capacity: 50000
- \* Relay Contact Signals for Lock, door sensor, alarm, exist button
- \* Standard Functions: DoorBell, Antipass-back, Webserver, SMS, WorkCode, DL5T
- \* Communicational: RS232/485, TCP/IP, USB-host
- \* Management software: Transaction fingerprint management and Access control attendance options



### FR-F16 Fingerprint /RFID Time Attendance and Access Control

- \* Dimension: 181x91x26mm
- \* Fingerprint capacity: 2000
- \* Transaction capacity: 10000
- \* RF ID card option: 125KHZ
- \* Record capacity: 50000 events
- \* Communication mode: TCT/IP, RS485
- \* USB connection is available
- \* Working voltage/current: 12V/1A
- \* Management software: Transaction fingerprint management and Access control attendance options



### FR-AQ020 Fingerprint/RFID Time Attendance

- \* Dimension: 210x125x39mm
- \* Identification Mode Fingerprint, Password, Proximity Card
- \* 2.8 inch TFT (320\*240)
- \* Fingerprint Capacity 2,000, ID Card capacity: 30,000
- \* Log Capacity 100,000 events
- \* Communication: USB Flash Drive Download + USB
- \* Identification Time <= 1s FRR<= 0.1% FAR<= 0.0001%
- \* Operating Mode Off-line / Online
- \* Dimension: 210\*125\*39mm



### FR-K28 Fingerprint Time Attendance

- \* Dimension: 181x129x51 mm
- \* Fingerprint Capacity: 3000 templates
- \* Transaction Capacity: 100,000
- \* Communications: RS232/485, TCP/IP, USB-host, USB-client
- \* Display: 3 inches TFT Screen
- \* Power Supply: 5V DC 2A



### FR-H3 Fingerprint Time Attendance

- \* Dimension: 158x124x110 mm
- \* Fingerprint Capacity: 500 templates
- \* Transaction Capacity: 30,000
- \* Communications: USB client
- \* Back-up battery: 1300 mAh lithium ion battery
- \* Display: Blake & White LCD
- \* Power Supply: 5V DC 800A



### FR-IFACE302 Facial & Fingerprint Time Attendance and Access Control Terminal

- \* Face capacity: 700, Fingerprint capacity: 3000
- \* ID Card capacity: 10,000
- \* Identification methods include Face, Fingerprint/RFID and/or Password
- \* Built-in contacts for 3rd party electric lock, door sensor, alarm, exit button, or bell.
- \* Communication: TCP/IP, RS232/485, USB-HOST



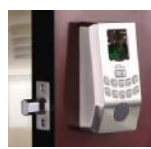
### L5000 Intelligent Fingerprint Lock with OLED Display

- \* Intuitive menu, easy operation, intelligent communication
- \* Robust housing made of Zinc alloy
- \* OLED display and USB interface
- \* Can be opened by fingerprint, card, PIN or Key
- \* Capacity: 500 user templates, 100 passwords, 100 cards, 30,000 users
- \* Front panel colors: blue, black, pink, grey and silver polishing



### L7000/L7000U Intelligent Fingerprint Lock with OLED Display

- \* Simple menu, easy operation, intelligent communication
- \* Zinc alloy die-casting
- \* Can be opened by fingerprint, PIN or Key
- \* American Standard Cylinder, optional single and double bolt
- \* OLED display and USB interface (L7000U)
- \* Front panel color option: black, silver & black.
- \* 500 user templates, 100 passwords, 30,000 user capacity
- \* Easy for installation.
- \* Can change the handle from Right to Left. DIY design.



### HL100 Intelligent Fingerprint Lock

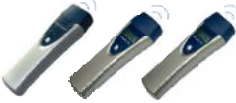
- \* Advanced Biometric Technology
- \* Rugged Steel Construction
- \* Illuminated keypad Entry
- \* Can be opened by Fingerprint, PIN or Key
- \* 100 User Fingerprint or PIN Capacity
- \* American Standard Cylinder
- \* External battery Backup connector
- \* Low Battery Warning
- \* Reversible lever for Left or Right Operation
- \* Easy to Install with No Wiring Required

## RFID Guard Tour Probe



### E300+ / E400+ RFID Guard Tour Probe

- \* Imported industrial grade devices ensure normal operation of long-term power.
- \* Solid alloy casing has strong ability of anti-tempering.
- \* Internal closed-wide flexible glue, waterproof, cushion.
- \* Sound, LED lighting, vibration triple prompted reader.
- \* The appearance of size is 130mm \* 42.5mm, equivalent to the fist length of ordinary people.



### E6B / E6C / E6E RFID Guard Tour Probe

- \* Press switch button when reading card, Sound and light when reading successfully
- \* Mini USB port, easy to use and long life.
- \* Low tiny-Power consumption, very low static current.
- \* Built in replaceable lithium battery, More than 500 thousands read times.
- \* Flash memory, 30000 memory record.
- \* E6C / E6E With LCD display current time and ID No.



### E6F RFID Guard Tour Probe

- \* Automatic card reading
- \* wireless communication
- \* no button switch, no communication jack
- \* no damage point of failure, metal inner plastic processing outsourcing, full-sealed structure
- \* super waterproof, 30000 memory records
- \* 3V Lithium battery power supply, battery life is above half year.

## Power Supply Series



### NU-02 Access Control Power Supply Series

- \* Dimensions: 180x78Wx65H(mm)
- \* Input Voltage: 220VAC-240VAC:50HZ
- \* NU-02A: (12VDC/3A output)
- \* NU-02B: (12VDC/5A output)
- \* Protect Safely: Short Circuit protection
- \* Suitable For : Access control, Electric lock
- \* 110VAC input can be customized



### NU-03 Power Supply/charger Series

- \* Dimensions: 222x222Wx83H(mm)
- \* Input Voltage: 220VAC-240VAC:50HZ
- \* NU-03A: (12VDC/3A output)
- \* NU-03B: (12VDC/5A output)
- \* Protect Safely: Short Circuit protection
- \* Suitable For : Access control, Electric lock
- \* Optional Accessories: Backup Battery, 12V/7H
- \* 110VAC input can be customized



### NU-K80 Access Control Power Supply

- \* Dimensions: 120Lx95Wx38H(mm)
- \* Input Voltage: 110VAC-260VAC:50HZ-60HZ
- \* Output Voltage: 12VDC: 3A
- \* Time Relay: 0~15sec.
- \* Standard Design: Steel material, Painted
- \* Protect Safely: Short Circuit protection
- \* Suitable For : Access control, Electric lock

## Rfid Card



EM-03 (Keytag ID Card)



EM-01A ID Thin Card



EM-01B ID Thick Card



EM-01C Special ID Card for middle distance reader



MF-02A IC card made in China



MF-02B Imported IC Card

## Accessories



L/ZB-180/280/380/600 L/Z Bracket for Inward Door (EM LOCK)



UB-180/280/380/600 U Bracket for Frameless Glass (EM LOCK)



RB-100C Aluminum material Bracket for glass door frameless below (for Electric Drobbolt)



RB-100A Stainless Steel Bracket for Fully Frameless Glass Door (for Electric Drobbolt)



RB-100B Small Stainless Steel Bracket for glass door frameless below (for Electric Drobbolt)



RB-100D Bracket special for Auto-door (for Electric Drobbolt)



Square shape door closer series (Small/Medium/Big)



DB-AUTO100/120/200 Swing Door Opener



RS232-RS485 Network Converter